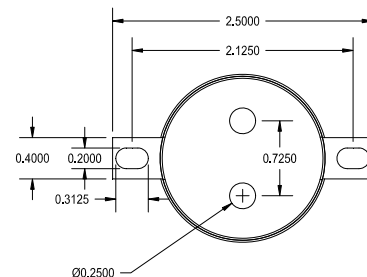
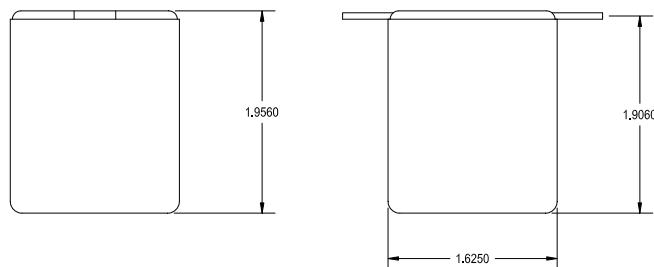


1140-LN-E

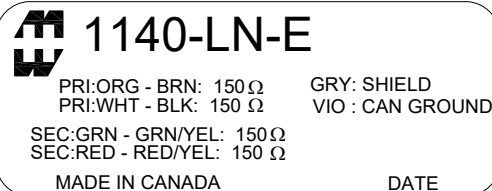
LINE INPUT TRANSFORMER
1:1 TURNS RATIO WITH SPLIT WINDINGS

This transformer is designed for high input levels up to +19dbu, along with a wide bandwidth and low distortion. This transformer can be used in multiple configurations 1:2, 1:1, or 2:1
It also has excellent shielding from the mu metal can.

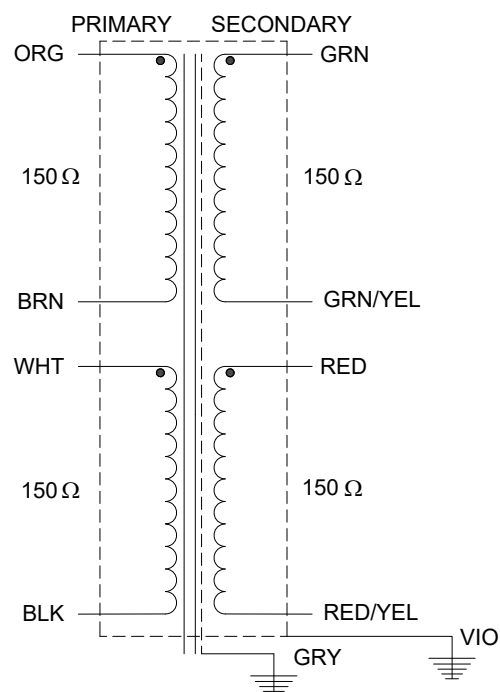


ELECTRICAL SPECIFICATIONS

Characteristic	Conditions	Typical
Input Impedance		150/600 Ω
Output Impedance		150/600 Ω
Primary Input Impedance	@ 1kHz +4dbu Test Circuit 3	800Ω
Secondary Output Impedance	@ 1kHz +4dbu Test Circuit 4	800Ω
Maximum input Level	@ 20Hz	+19.0db
DCR		
Primary	@20°C	27/27 Ω
Secondary	@20°C	74/74Ω
Frequency Response	@ 20 Hz, +4 dbu, Test Circuit 3	-0.04db
	@ 20 kHz, +4 dbu, Test Circuit 3	-0.04db
Turns ratio		1:1
Common Mode Rejection Level	@ 60 Hz Test Circuit 2	70db
	3kHz Test Circuit 2	60db
THD	@ 1kHz +4 dbu Test Circuit 1	0.001%
	@ 20Hz +4 dbu Test Circuit 1	0.03%
Phase Shift	@ 20 Hz Test Circuit 1	0.27°
	@ 20 kHz Test Circuit 1	-10.0°
Capacitance	Primary to Shield and Case	1.75nf
	Secondary to Shield and Case	2.25nf
Dielectric Strength		500 Vrms

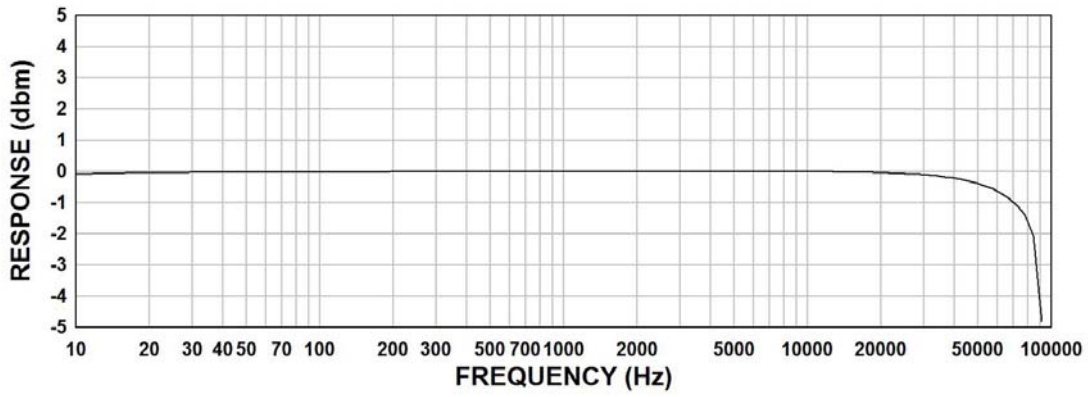


1140 - LN - E



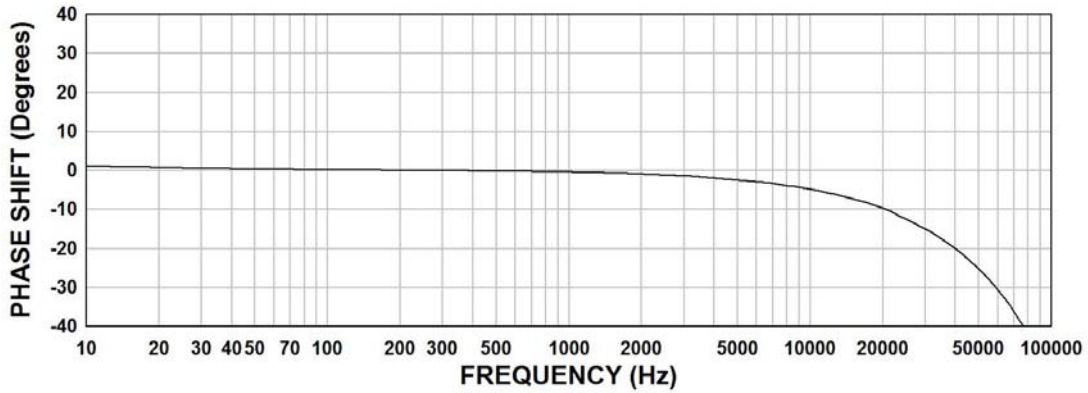
1140-LN-E FREQUENCY RESPONSE

Input Level +4dbu
Rs = 600Ω, RL = 600Ω



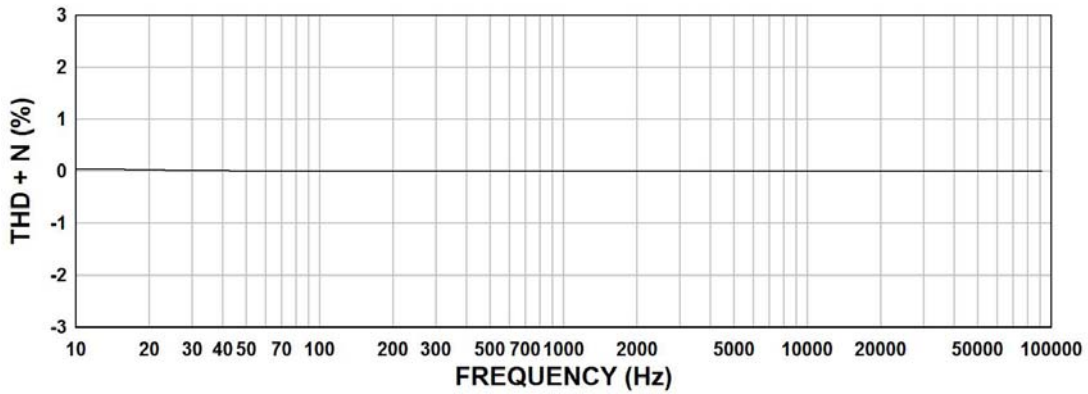
1140-LN-E PHASE SHIFT

Input Level +4dbu
Rs = 600Ω, RL = 600Ω

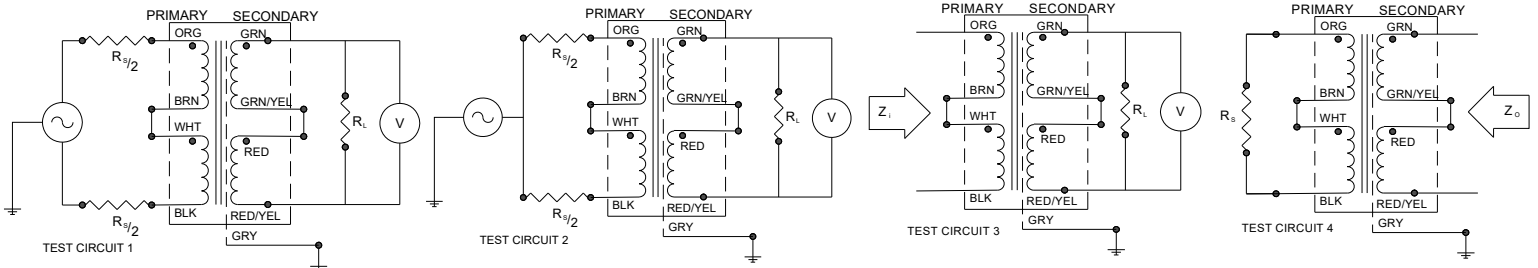


1140-LN-E THD + N

Input Level +4dbu
Rs = 600Ω, RL = 600Ω



TYPICAL TEST CIRCUIT



Measurement instruments: Hp4192a Impedance Analyzer; Hp3456a DVM; Keithley 2002 DVM; D scope series iii audio analyzer

This drawing and the information in it is the property of Hammond Manufacturing. It may not be reproduced, transmitted or used in any manner whatsoever without the written permission of Hammond Manufacturing. Data subject to change without notice.